

LEGEND

- 10' CONTOUR
- - - 2' CONTOUR
- ==== EXIST. 12" CMP
- - - - FIBER OPTIC LINE
- ==== RETAINING WALL
- ⊙ CONSTRUCTION TBM

CONSTRUCTION TBM
 2 X 1/2" REBAR SHALL BE PLACED AS SHOWN ON THE PLAN PRIOR TO CONSTRUCTION. ELEVATION SHALL BE DETERMINED WHEN BENCHMARKS ARE SET THE ZONE 2 COORDINATES FOR THOSE REBARS ARE AS FOLLOWS:

TBM 1	TBM 2
N)2170223.26	N)2170383.23
E)6332153.73	E)6332132.14
STA 101+60.00 R 9.00	STA 103+20.00 R 9.00

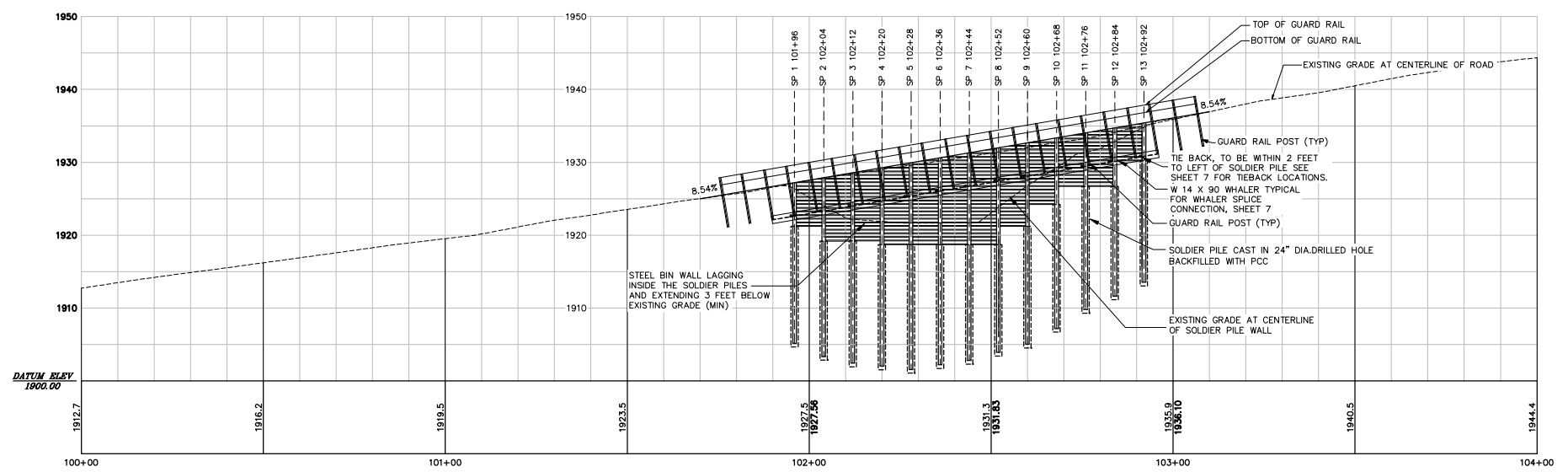
BM=⊗
 1/2" REBAR AT AN ELEVATION OF 1349.54 AT APX. STATION 106+10.5
 ZONE 2 GRID COORDINATES FOR REBAR
 N 2170520.69
 E 6332264.28

PLAN VIEW

1949.54
 1/2RB

SOLDIER PILE WALL INFORMATION TABLE

SOLDIER PILE NUMBER	SOLDIER PILE LOCATION STATION, OFFSET	SOLDIER PILE CROSS SECTION TYPE	APPROXIMATE SOLDIER PILE TOTAL HEIGHT (MIN)	APPROXIMATE TOP OF PILE ELEVATION	APPROXIMATE LAGGING DIMENSION
SP1	STA: 101+96 OFFSET: 11.7 R	W 12 X 72	22.0'	1927.2	6.4' TALL X 7.88' WIDE
SP2	STA: 102+04 OFFSET: 11.7 R	W 12 X 72	24.5'	1927.8	9.1' TALL X 7.88' WIDE
SP3	STA: 102+12 OFFSET: 11.7 R	W 12 X 72	26.0'	1928.4	9.7' TALL X 7.88' WIDE
SP4	STA: 102+20 OFFSET: 11.7 R	W 12 X 72	27.0'	1929.0	11' TALL X 7.88' WIDE
SP5	STA: 102+28 OFFSET: 11.7 R	W 12 X 72	28.0'	1929.6	11.6' TALL X 7.88' WIDE
SP6	STA: 102+36 OFFSET: 11.7 R	W 12 X 72	28.0'	1930.2	12.3' TALL X 7.88' WIDE
SP7	STA: 102+44 OFFSET: 11.7 R	W 12 X 72	28.0'	1930.8	13.0' TALL X 7.88' WIDE
SP8	STA: 102+52 OFFSET: 11.7 R	W 12 X 72	27.5'	1931.4	11.2' TALL X 7.88' WIDE
SP9	STA: 102+60 OFFSET: 11.7 R	W 12 X 72	27.0'	1932.0	8.9' TALL X 7.88' WIDE
SP10	STA: 102+68 OFFSET: 11.7 R	W 12 X 72	25.5'	1932.7	7' TALL X 7.88' WIDE
SP11	STA: 102+76 OFFSET: 11.7 R	W 12 X 72	23.5'	1933.3	7.7' TALL X 7.88' WIDE
SP12	STA: 102+84 OFFSET: 11.7 R	W 12 X 72	23.0'	1934.1	4.9' TALL X 7.88' WIDE
SP13	STA: 102+92 OFFSET: 11.7 R	W 12 X 72	22.0'	1935.0	



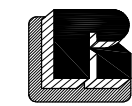
SCALE:
 H: 1"=20'
 V: 1"=10'

PROFILE-SOLDIER PILE RETAINING WALL

NO.	DATE	DESCRIPTION	BY
1	11-11	INITIAL SUBMITTAL	EBH
0	10-10	PRELIMINARY REVIEW	EBH

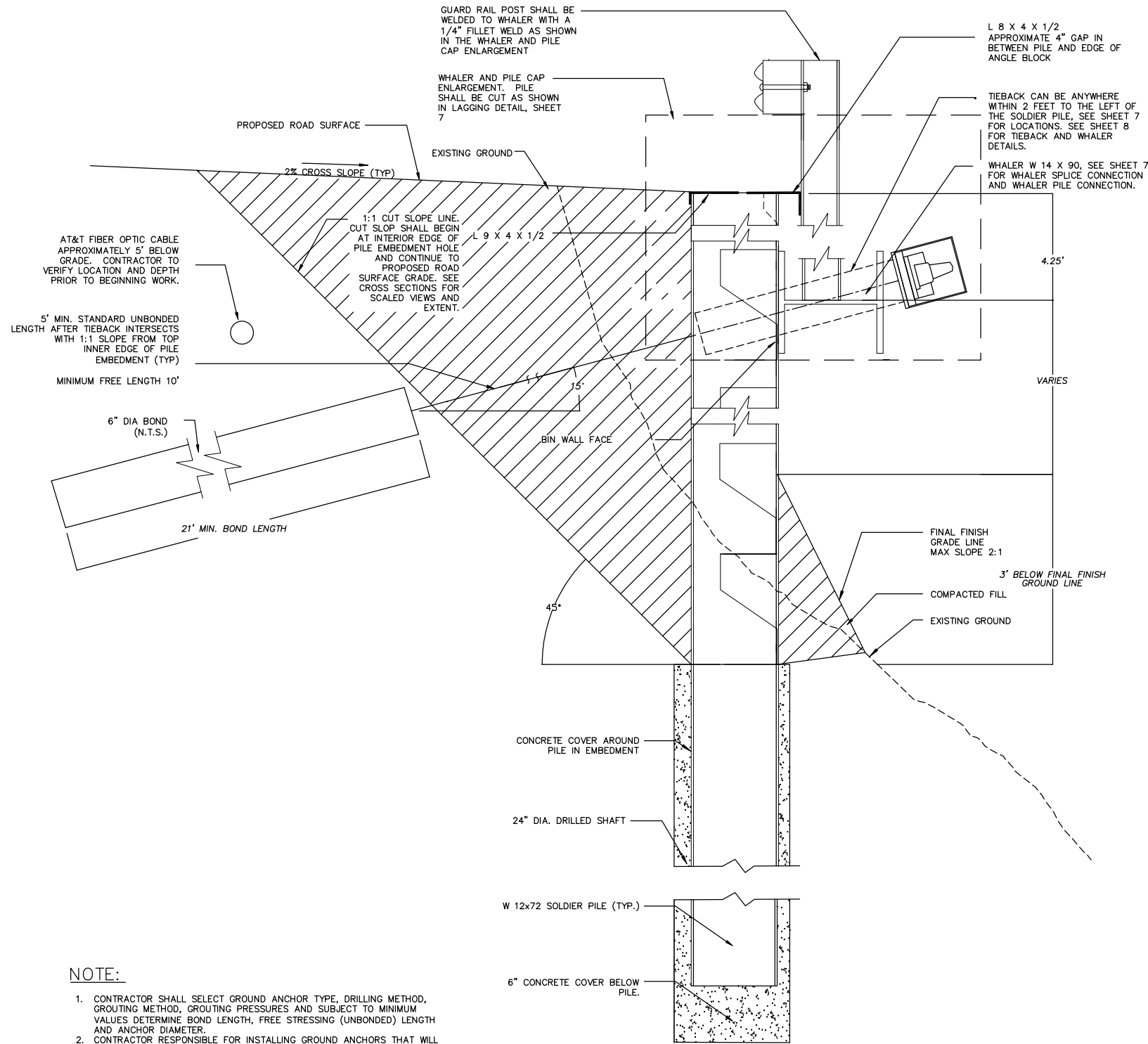
COUNTY OF LAKE
 255 N. FORBES STREET, LAKEPORT
 CALIFORNIA

**SOLDIER PILE RETAINING WALL
 PLAN AND PROFILE**
 BARTLETT SPRINGS ROAD MP 1.4
 LAKE COUNTY, CALIFORNIA



RUZICKA ASSOCIATES
 CONSULTING ENGINEERS
 CIVIL ENGINEERING PLANNING SURVEYING
 P.O. BOX 1189 2495 PARALLEL DRIVE
 LAKEPORT CA 95453 (707) 263-6155
 FAX (707) 263-0768

DRAWN BY:	EBH	DATE:	11/11/08
CHECKED BY:	THOMAS ALAN HUNT RCE # 53327	DRAWING NO.:	BARTLETTI.4rev2
JOB NO.:	07-6920.01	SHEET	3 of 10



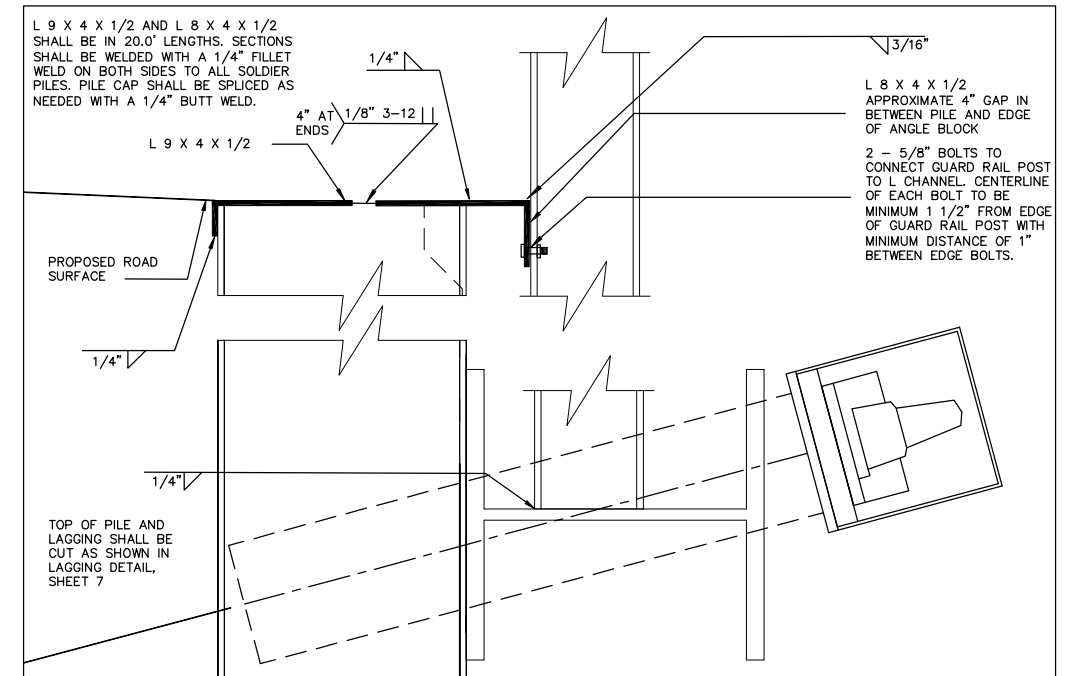
NOTE:

- CONTRACTOR SHALL SELECT GROUND ANCHOR TYPE, DRILLING METHOD, GROUTING METHOD, GROUTING PRESSURES AND SUBJECT TO MINIMUM VALUES DETERMINE BOND LENGTH, FREE STRESSING (UNBONDED) LENGTH AND ANCHOR DIAMETER.
- CONTRACTOR RESPONSIBLE FOR INSTALLING GROUND ANCHORS THAT WILL DEVELOP THE REQUIRED LOAD CARRYING CAPACITY.

P.G.A. = PERMANENT GROUND LINE

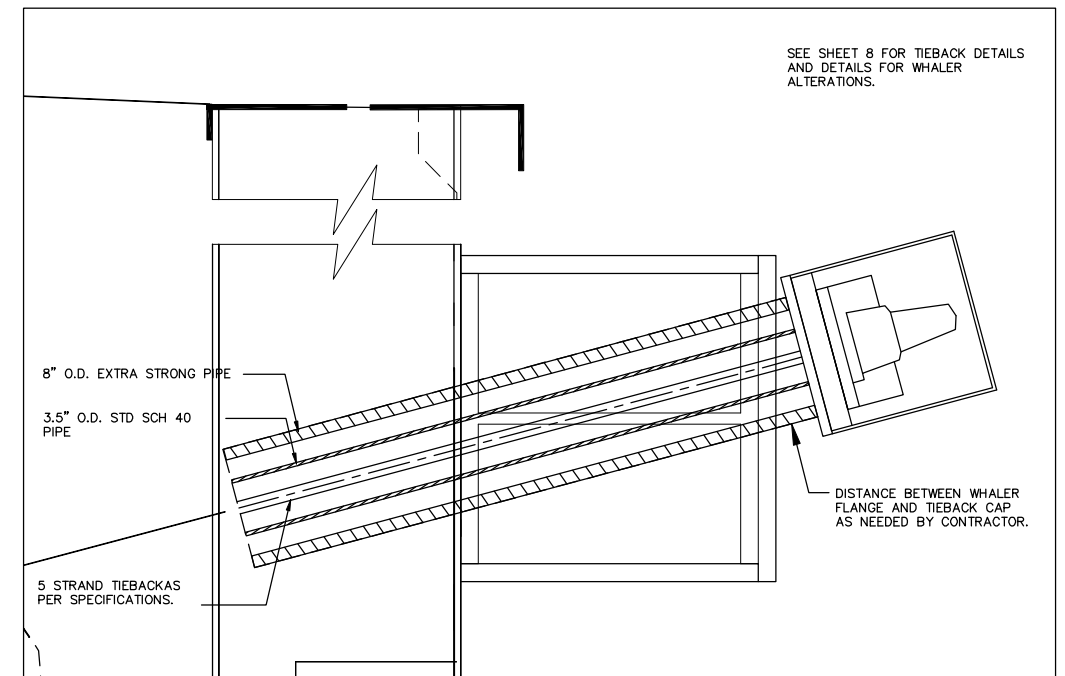
SOLDIER PILE WALL AND ANCHOR DETAIL

N.T.S.



WHALER AND PILE CAP ENLARGEMENT

N.T.S.



TIEBACK ANCHOR

N.T.S.

NO.	DATE	DESCRIPTION	BY
1	11-11	INITIAL SUBMITTAL	EBH
0	10-10	PRELIMINARY REVIEW	EBH

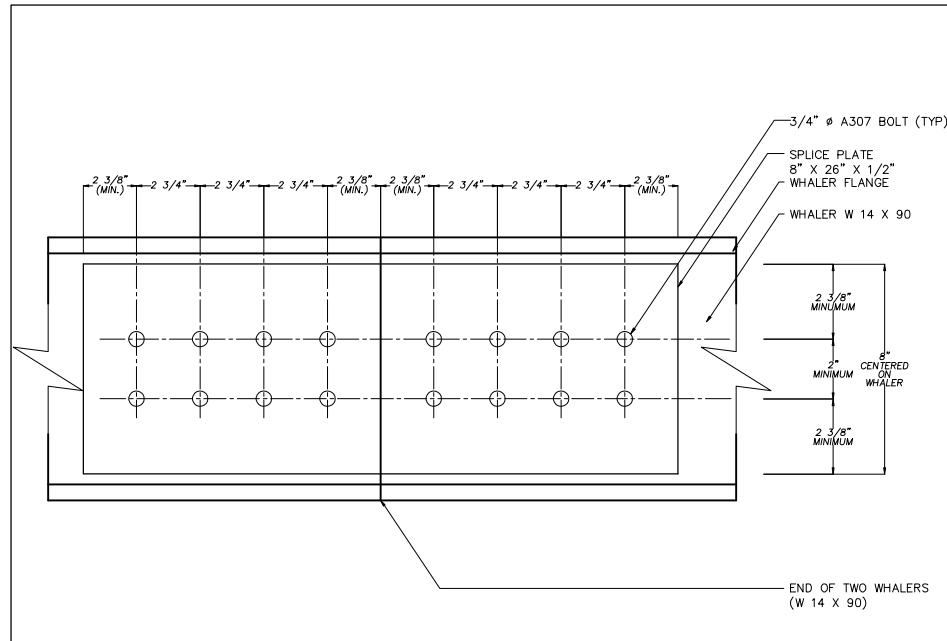
COUNTY OF LAKE
255 N. FORBES STREET, LAKEPORT
CALIFORNIA

**SOLDIER PILE RETAINING WALL
SOLDIER PILE DETAILS**
BARTLETT SPRINGS ROAD MP 1.4
LAKE COUNTY, CALIFORNIA

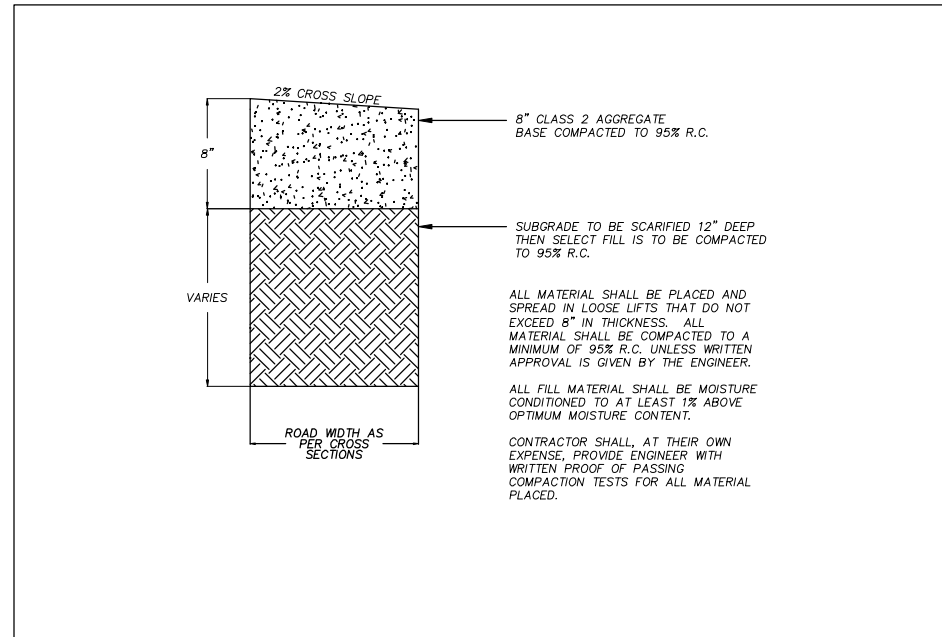


RUZICKA ASSOCIATES
CONSULTING ENGINEERS
CIVIL ENGINEERING PLANNING SURVEYING
P.O. BOX 1189 2495 PARALLEL DRIVE
LAKEPORT CA. 95453 (707) 263-6155
FAX (707) 263-0768

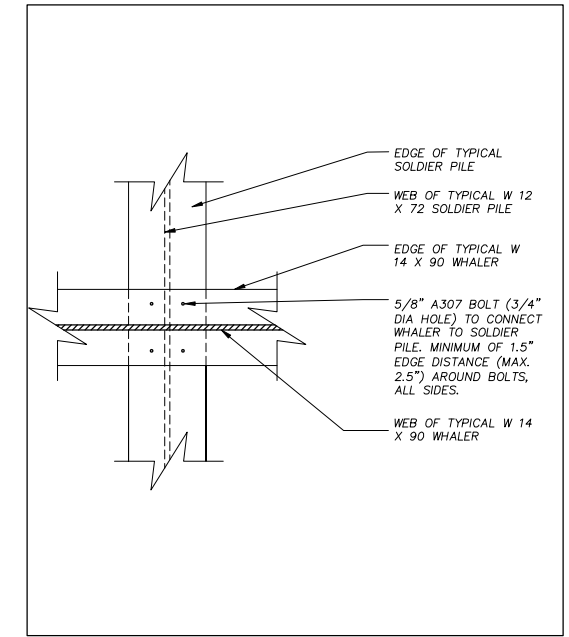
DRAWN BY:	EBH	DATE:	11/11/08
CHECKED BY:	THOMAS ALAN HUNT RCE # 53327	DRAWING NO.:	BARTLETT1.4rev2
JOB NO.:	07-6920.01	SHEET	6 of 10



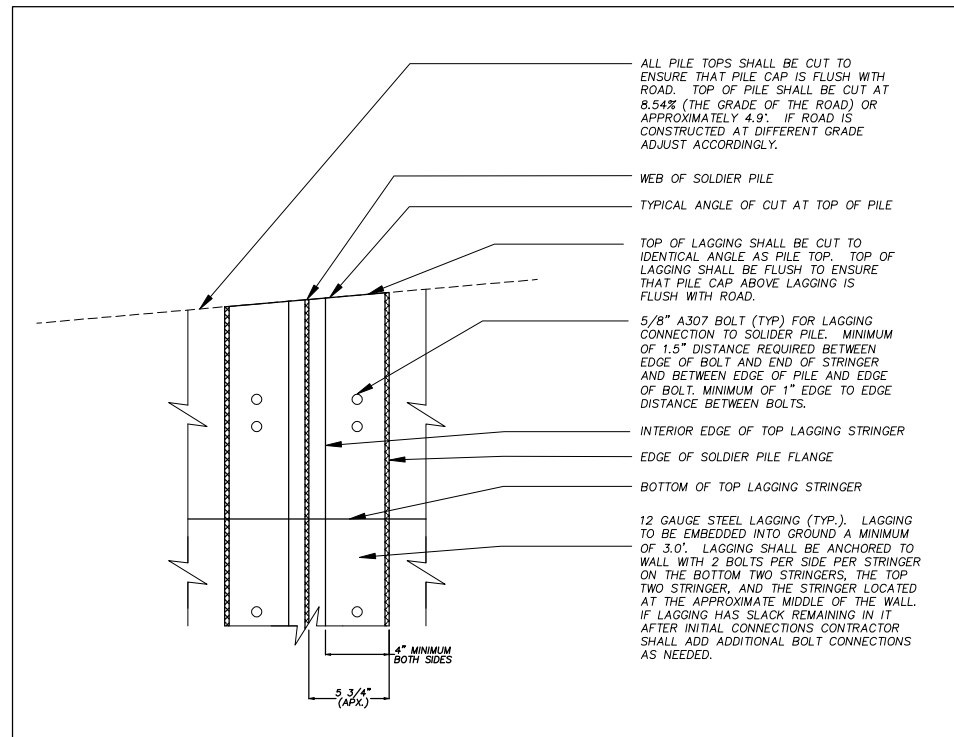
WHALER SPLICE CONNECTION



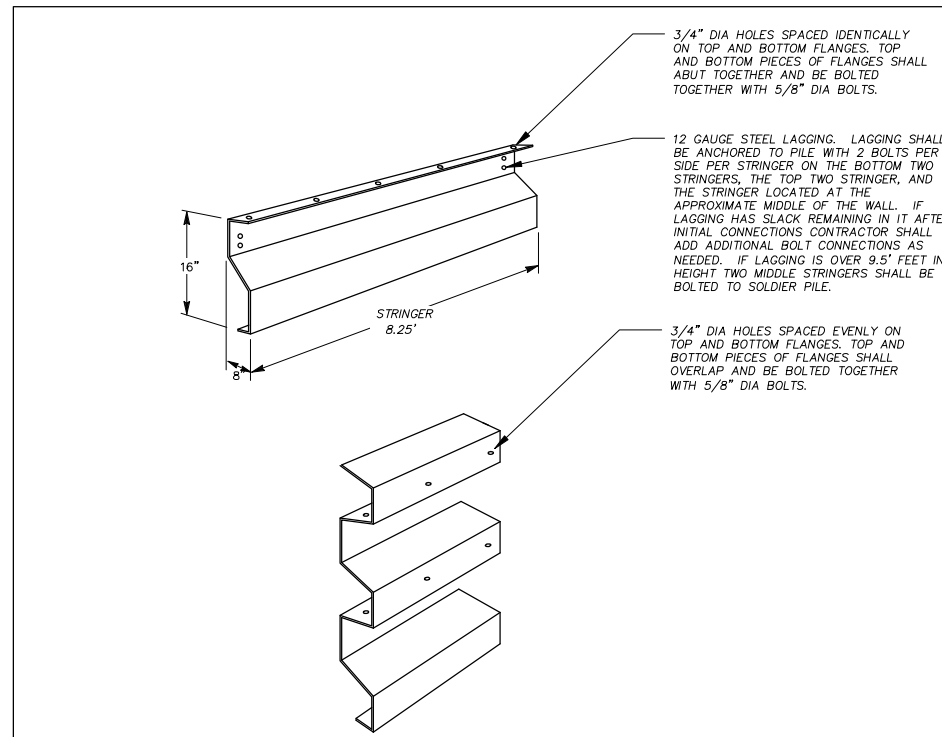
TYPICAL REPLACEMENT ROAD SECTION



WHALER TO SOLDIER PILE CONNECTION DETAIL



LAGGING CONNECTION DETAIL



LAGGING DETAIL

TIEBACK STATION TABLE

SOLDIER PILE NUMBER	SOLDIER PILE LOCATION STATION, OFFSET	TIEBACK LOCATION STATION
SP1	STA: 101+96 OFFSET: 11.7 R	STA: 101+95
SP2	STA: 102+04 OFFSET: 11.7 R	STA: 102+03
SP3	STA: 102+12 OFFSET: 11.7 R	STA: 102+11
SP4	STA: 102+20 OFFSET: 11.7 R	STA: 102+19
SP5	STA: 102+28 OFFSET: 11.7 R	STA: 102+26
SP6	STA: 102+36 OFFSET: 11.7 R	STA: 102+35
SP7	STA: 102+44 OFFSET: 11.7 R	STA: 102+43
SP8	STA: 102+52 OFFSET: 11.7 R	STA: 102+51
SP9	STA: 102+60 OFFSET: 11.7 R	STA: 102+59
SP10	STA: 102+68 OFFSET: 11.7 R	STA: 102+67
SP11	STA: 102+76 OFFSET: 11.7 R	STA: 102+74.66
SP12	STA: 102+84 OFFSET: 11.7 R	STA: 102+82.5
SP13	STA: 102+92 OFFSET: 11.7 R	STA: 102+91

TIEBACK STATION TABLE

NO.	DATE	DESCRIPTION	BY
1	11-11	INITIAL SUBMITTAL	EBH
0	10-10	PRELIMINARY REVIEW	EBH

COUNTY OF LAKE
255 N. FORBES STREET, LAKEPORT
CALIFORNIA

**SOLDIER PILE RETAINING WALL
MISCELLANEOUS DETAILS**

BARTLETT SPRINGS ROAD MP 1.4
LAKE COUNTY, CALIFORNIA

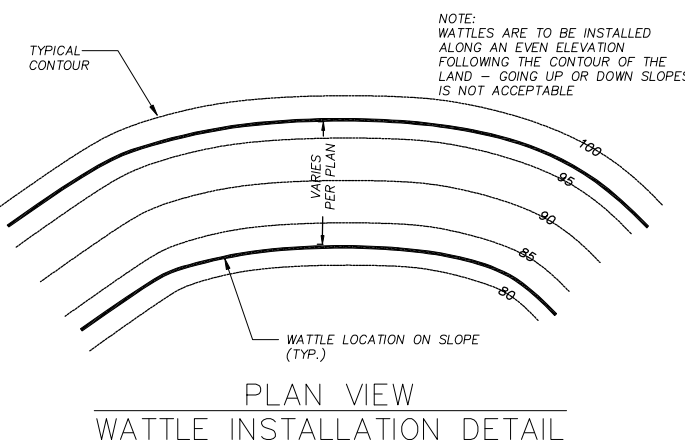
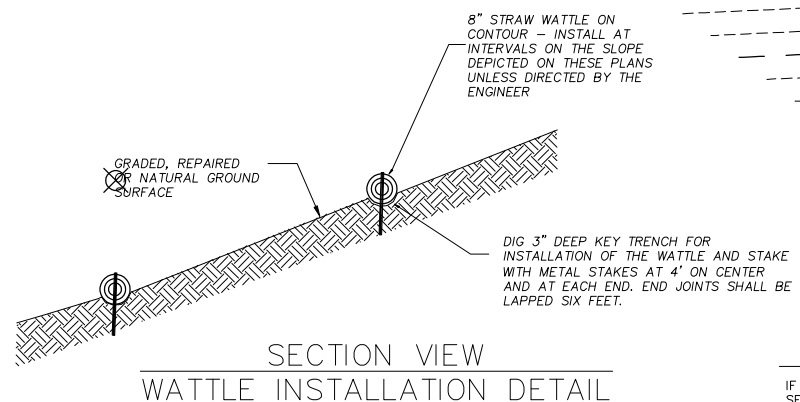
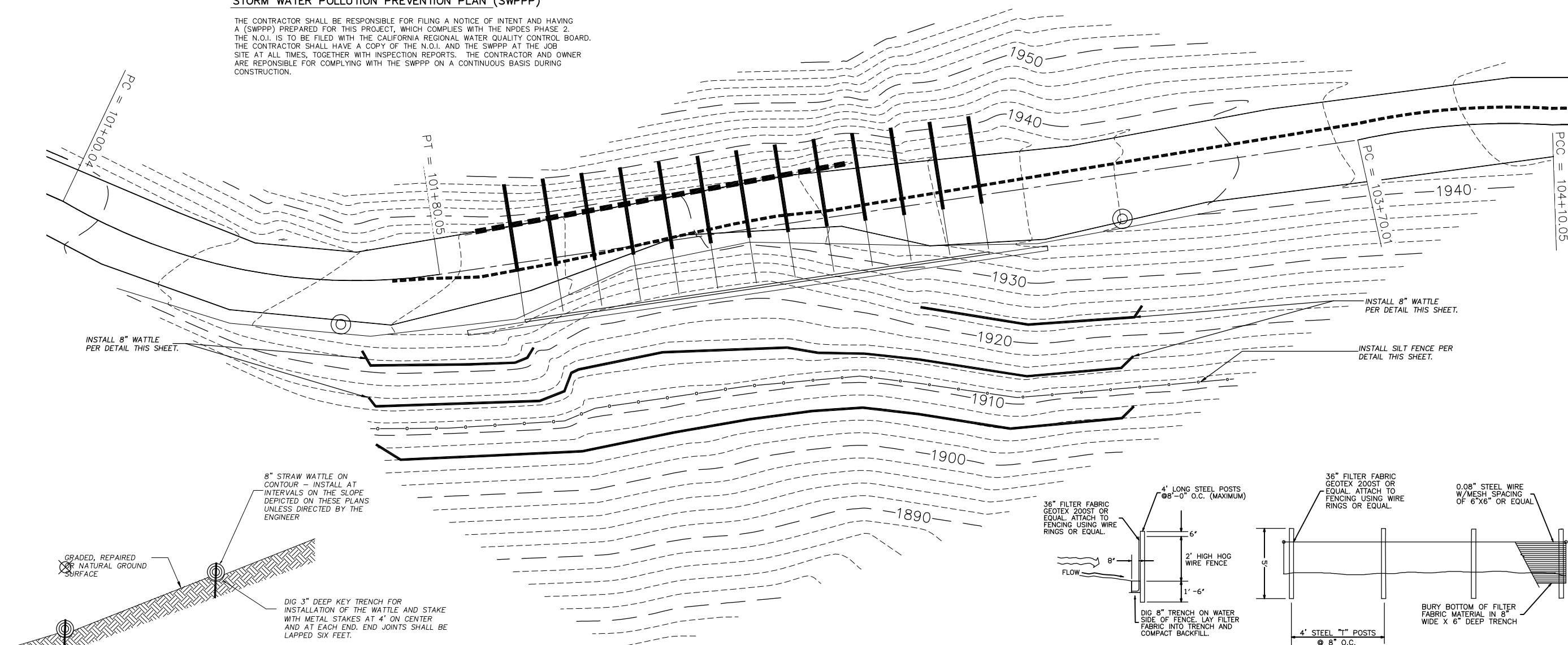


RUZICKA ASSOCIATES
CONSULTING ENGINEERS
CIVIL ENGINEERING PLANNING SURVEYING
P.O. BOX 1189 2495 PARALLEL DRIVE
LAKEPORT CA. 95453 (707) 263-6155
FAX (707) 263-0768

DRAWN BY:	EBH	DATE:	11/11/08
CHECKED BY:	THOMAS ALAN HUNT RCE # 53327	DRAWING NO.:	BARTLETTI.4rev2
JOB NO.:	07-6920.01	SHEET	7 of 10

STORM WATER POLLUTION PREVENTION PLAN (SWPPP)

THE CONTRACTOR SHALL BE RESPONSIBLE FOR FILING A NOTICE OF INTENT AND HAVING A (SWPPP) PREPARED FOR THIS PROJECT, WHICH COMPLIES WITH THE NPDES PHASE 2. THE N.O.I. IS TO BE FILED WITH THE CALIFORNIA REGIONAL WATER QUALITY CONTROL BOARD. THE CONTRACTOR SHALL HAVE A COPY OF THE N.O.I. AND THE SWPPP AT THE JOB SITE AT ALL TIMES, TOGETHER WITH INSPECTION REPORTS. THE CONTRACTOR AND OWNER ARE RESPONSIBLE FOR COMPLYING WITH THE SWPPP ON A CONTINUOUS BASIS DURING CONSTRUCTION.



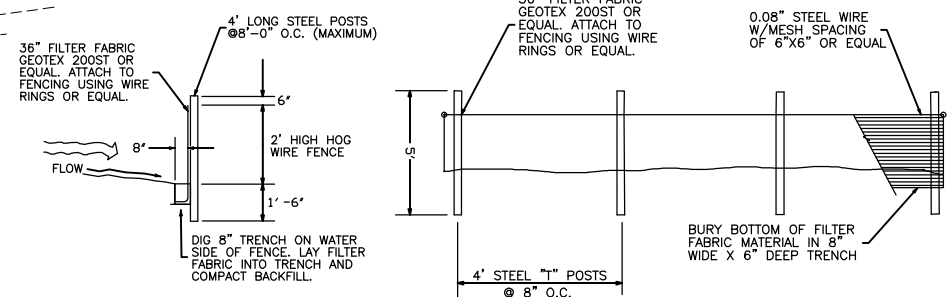
EROSION CONTROL SPECIFICATIONS

IF CONSTRUCTION PROCEEDS DURING THE FALL, WINTER AND SPRING RAINY SEASON THE FOLLOWING TEMPORARY EROSION CONTROL METHODS WILL BE EMPLOYED:

- THE SITE SHALL BE MONITORED DURING RAINFALL PERIODS AND APPROPRIATE MEASURES WILL BE EMPLOYED TO PREVENT BREACHING OF THE STRAW WATTLES AND TO CONTROL ANY LOCALIZED EROSION.
- STRAW WATTLES, STRAW AND/OR EROSION CONTROL BLANKETS SHALL BE UTILIZED TO CONTROL EROSION ON CUT AND FILL SLOPES DURING AND AFTER CONSTRUCTION. THE STRAW WATTLES 8" IN DIAMETER SHALL BE KEYED INTO THE SLOPE 3" AND LAID ON CONTOUR AS SHOWN ON THE EROSION CONTROL PLAN AND THE INSTALLATION DETAIL. THE CONTRACTOR SHALL FOLLOW THE MANUFACTURER'S RECOMMENDED STAKING METHODS.
- IF A TEMPORARY SILT FENCE BECOMES NECESSARY IT SHALL CONSIST OF FILTER FABRIC STRETCHED AND ATTACHED TO SUPPORTING POSTS, WITH WIRE FENCE BACKING AS REQUIRED BY THE TYPE OF FABRIC EMPLOYED. SILT FENCE MAY BE MADE OF BURLAP OR ACCEPTABLE SYNTHETIC MATERIAL SUCH AS POLYPROPYLENE, NYLON, POLYESTER OR POLYETHYLENE YARN.
- ANY EXISTING STORM DRAIN INLETS IN THE CONSTRUCTION ZONE SHALL HAVE STRAW WATTLE SILT FILTERS INSTALLED AT GRADE CONTOUR AROUND THE INLET.
- SEED AND FERTILIZE EXCAVATION, EMBANKMENT SLOPES AND AREAS THAT HAVE BEEN DISTURBED DUE TO CONSTRUCTION. IF AVAILABLE PROVIDE TEMPORARY IRRIGATION AS REQUIRED TO ESTABLISH A GOOD ROOT SYSTEM.
- AFTER SEEDING APPLY STRAW OVER AREAS DISTURBED BY CONSTRUCTION. APPLY STRAW AT THE RATE OF 2 TONS PER ACRE. ONCE THE STRAW IS PLACED IT SHALL BE PUNCHED WITH A SPECIAL ROTARY SPIKE TOOL OR A TACKAIFIER EMULSION SHALL BE APPLIED TO THE STRAW.

DUST CONTROL DURING CONSTRUCTION SPECIFICATIONS

- WATER ALL ACTIVE CONSTRUCTION AREAS AT LEAST TWICE DAILY.
- COVER ALL TRUCKS HAULING SOIL, SAND, AND OTHER LOOSE MATERIALS, OR REQUIRE ALL TRUCKS TO MAINTAIN AT LEAST TWO FEET OF FREEBOARD.
- APPLY WATER THREE TIMES DAILY OR APPLY (NON-TOXIC) SOIL STABILIZERS ON ALL UNPAVED ACCESS ROADS, PARKING AREAS, AND STAGING AREAS AT CONSTRUCTION SITES.
- SWEEP DAILY (WITH WATER SWEEPERS) ALL PAVED ACCESS ROADS, PARKING AREAS, AND STAGING AREAS AT CONSTRUCTION SITES.
- SWEEP STREETS DAILY (WITH WATER SWEEPERS) IF VISIBLE SOIL MATERIAL IS CARRIED ONTO ADJACENT PUBLIC ROADWAYS.
- HYDROSEED OR APPLY (NON-TOXIC) SOIL STABILIZER TO INACTIVE CONSTRUCTION AREAS (PREVIOUSLY GRADED AREAS INACTIVE FOR TEN DAYS OR MORE).
- ENCLOSE, COVER, WATER TWICE DAILY OR APPLY (NON-TOXIC) SOIL BINDERS TO EXPOSED STOCKPILES (DIRT, SAND, ETC.).
- INSTALL STRAW WATTLES OR SIMILAR EROSION CONTROL PRODUCTS TO PREVENT SILT RUNOFF TO PUBLIC ROADWAYS AND PUBLIC STORM DRAIN SYSTEM.
- REPLANT VEGETATION IN DISTURBED AREAS WITHIN 30 DAYS OF FINAL GRADING.



SILT FENCE DETAIL FOR BANK PROTECTION
Not To Scale

NO.	DATE	DESCRIPTION	BY
1	11-11	INITIAL SUBMITTAL	EBH
0	10-10	PRELIMINARY REVIEW	EBH

COUNTY OF LAKE
255 N. FORBES STREET, LAKEPORT
CALIFORNIA

**SOLDIER PILE RETAINING WALL
EROSION CONTROL PLAN**
BARTLETT SPRINGS ROAD MP 1.4
LAKE COUNTY, CALIFORNIA

RUZICKA ASSOCIATES
CONSULTING ENGINEERS
CIVIL ENGINEERING PLANNING SURVEYING
P.O. BOX 1189 2495 PARALLEL DRIVE
LAKEPORT CA, 95453 (707) 263-6155
FAX (707) 263-0768

DRAWN BY: EBH	DATE: 11/11/08
CHECKED BY: THOMAS ALAN HUNT RCE # 53327	DRAWING NO.: BARTLETT1.4rev2
JOB NO.: 07-6920.01	SHEET: 10 of 10